



ARTESCIENZA
SCULPTURES

CATALOG 2018-2019

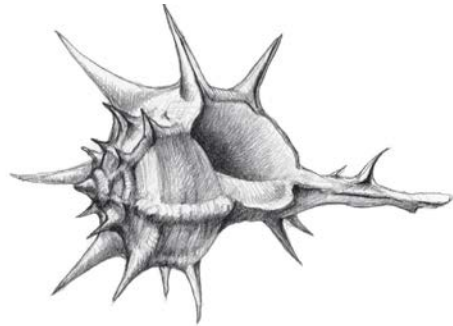
Artescienza s.a.s.

SPAZIO 148 - Workshop/ Laboratory

Via Molinetto, 148
16016 Cogoleto - Genova
ITALY

Registered Office

Lungomare Europa, 67
17019 Varazze - Savona
ITALY



www.artescienza.org
info@artescienza.org

Naturalistic sculptures

The "Artescienza - Sculture 2018" Catalog reasserts some examples of reproductions made for Italian and foreign Museums and Institutes. Reproductions of all marine organisms (vertebrates and invertebrates) on a 1: 1 scale or on a reduced scale can be provided on request.

All the naturalistic sculptures are realized on the basis of a deep anatomical study and the respect of the body proportions, almost always derived from a direct observation of the animals portrayed.

The structure of the sculptures is made of composite materials, resins and polyester filler, epoxy resins and putty, acrylic resins, fiberglass, silicones, wood and steel. The surface is finished with a two-component epoxy or polyurethane primer and painted with two-component polyurethane or acrylic paints.

The sculptures can be arranged for placement on ground or suspended structures.

The quotations shown in the "Sculptures 2018" Catalog refer to the supply of a single object, for requests for a greater number of sculptures, the quotation can be re-evaluated on the basis of the order of magnitude of the request itself.

From the estimates of the models are excluded:

- VAT and other taxes
- The bases for ground installation and suspension systems on walls or ceilings.
- The relative certifications, on the model, on the masonry works and on the suspension systems.



CETACEANS

Hyper-realistic reproductions for museums and thematic exhibitions



Striped dolphin (*Stenella coeruleoalba*)

Length: 2.10 m
Weight: 10 - 15 kg

Estimate: € 3,000 + VAT
Estimate ex-works (Via Molinetto, 148 - 16016 Cogoleto, ITALY)

Available also in four different postures. Suitable for outdoors exhibitions



Short beaked common dolphin (*Delphinus delphis*)

Length: 2.10 m
Weight: 10 - 15 kg

Estimate: € 3,000 + VAT

Estimate ex-works (Via Molinetto, 148 - 16016 Cogoletto, ITALY)

Available also in four different postures. Suitable for outdoors exhibition



Bottlenose dolphin (*Tursiops truncatus*)

Length: 3.00 m
Weight: 15 - 20 kg

Estimate: € 4,500 + VAT

Estimate ex-works (Via Molinetto, 148 - 16016 Cogoletto, ITALY)

Suitable for outdoors exhibitions



Risso's dolphin (*Grampus griseus*)

Length: 3.00 m
Weight: 15 - 20 kg

Estimate: € 4,500 + VAT
Estimate ex-works (Via Molinetto, 148 - 16016 Cogoleto, ITALY)

Suitable for outdoors exhibitions



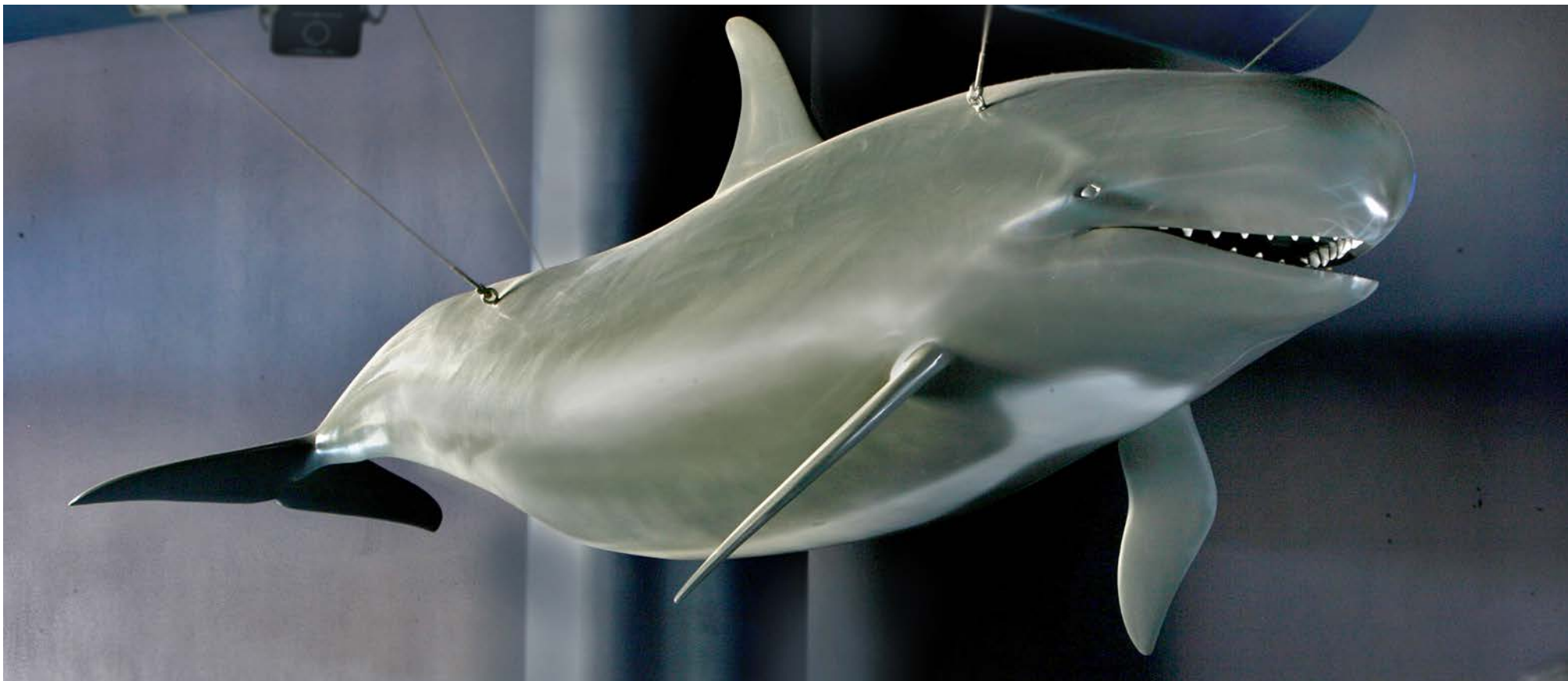
Long finned pilot whale (*Globicephala melas*)

Length: 5.00 m
Weight: 40 - 50 kg

Estimate: € 8,000 + VAT

Estimate ex-works (Via Molinetto, 148 - 16016 Cogoletto, ITALY)

Suitable for outdoors exhibitions



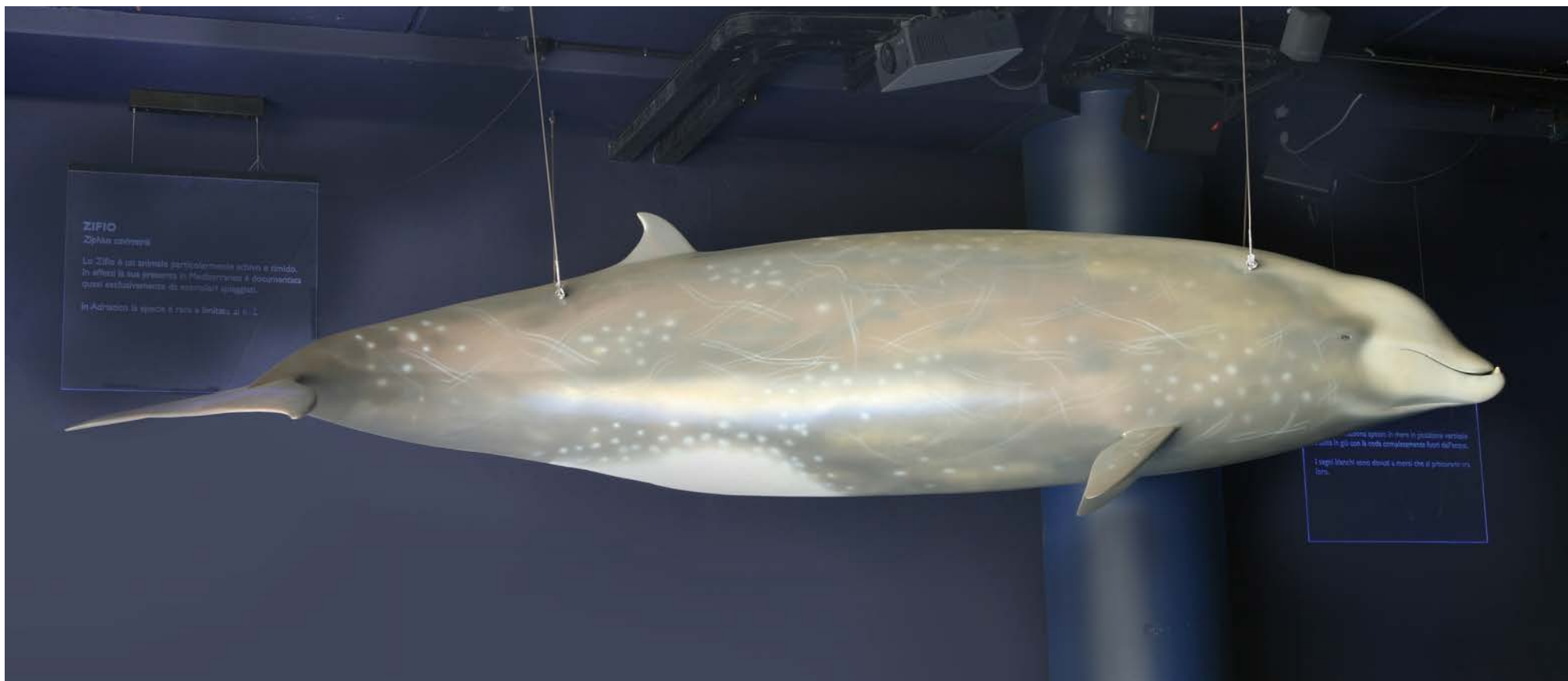
False killer whale (*Pseudorca crassidens*)

Length: 5.00 m
Weight: 40 - 50 kg

Estimate: € 8,500 + VAT

Estimate ex-works (Via Molinetto, 148 - 16016 Cogoletto, ITALY)

Suitable for outdoors exhibitions



Cuvier's beaked whale (*Ziphius cavirostris*)

Length: 5.00 m
Weight: 40 - 50 kg

Estimate: € 8,500 + VAT

Estimate ex-works (Via Molinetto, 148 - 16016 Cogoletto, ITALY)

Suitable for outdoors exhibitions



Narwhal (*Monodon monoceros*)

Length: 5.00 m + 2.5 m tooth

Weight: 40 - 50 kg

Estimate: € 8,500 + VAT

Estimate ex-works (Via Molinetto, 148 - 16016 Cogoletto, ITALY)

Suitable for outdoors exhibitions



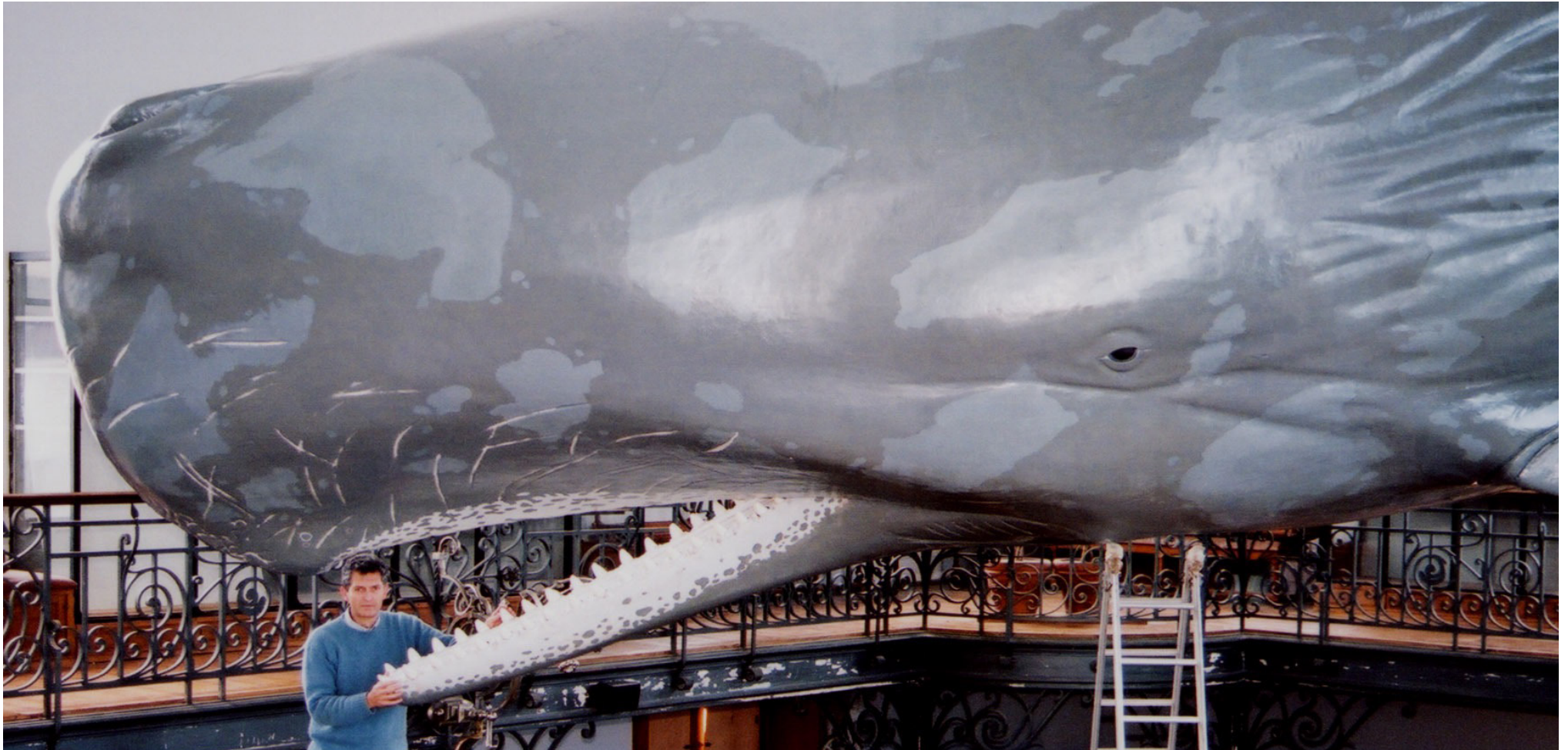
Fin whale (*Balaenoptera physalus*)

Length: 14.00 - 20.00 m
Weight: 2,000 - 4,000 kg

Estimate: € 70,000 - 90,000 + VAT

Estimates ex-works (Via Molinetto, 148 - 16016 Cogoletto, ITALY)

Suitable for outdoors exhibitions



Sperm whale (*Physeter catodon*)

Length: 12.00 - 18.00 m
Weight: 2,000 - 4,000 kg

Estimate: € 70,000 - 90,000 + VAT

Estimates ex-works (Via Molinetto, 148 - 16016 Cogoletto, ITALY)

Suitable for outdoors exhibitions



Sperm whale (*Physeter catodon*)

Length: 1.20 m
Weight: 10,00 kg

Estimate: € 4,000 + VAT

Estimates ex-works (Via Molinetto, 148 - 16016 Cogoletto, ITALY)

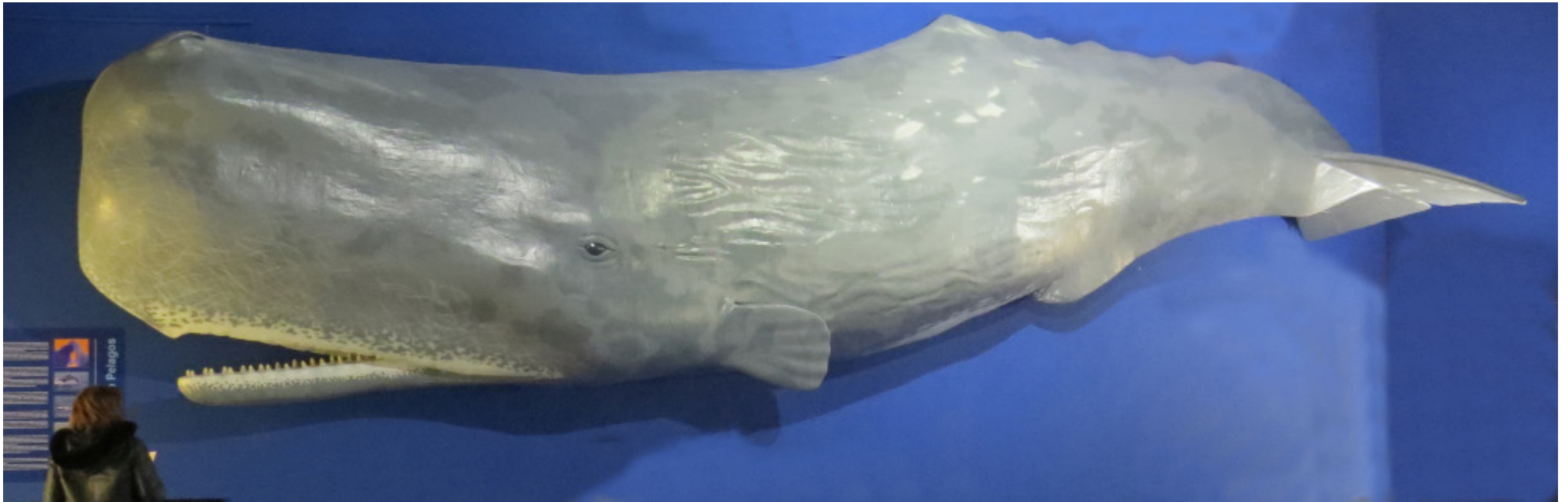


Artescienza is able to create hyper-realistic sculptures of all living and extinct cetacean species, based on an in-depth study of their anatomy and their fossil remains.

The reproductions can be in 1: 1 scale or in reduced scale

In the photo, the blue whale model (*Balaenoptera musculus*) is 24 m long and weighs 4,000 kg.

It is currently exhibited at the Shanghai Museum of Natural History (RPC), along with 14 other large marine animal models that have been created in collaboration with the Cinq-Art Company.



Sperm whale (*Physeter catodon*)

Model made of high relief for wall suspension

Length: 12.00 - 18.00 m

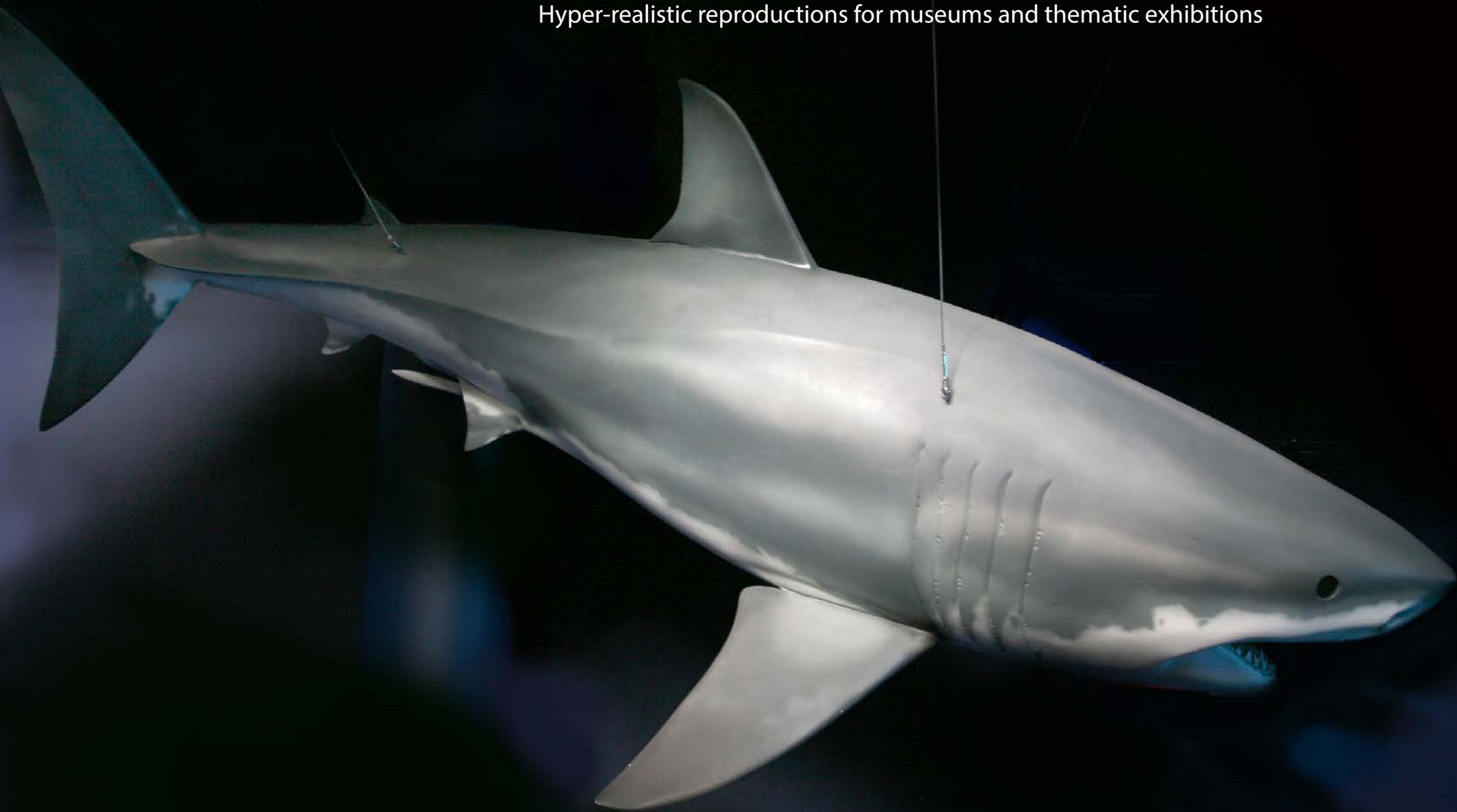
Weight: 600 - 1,500 kg

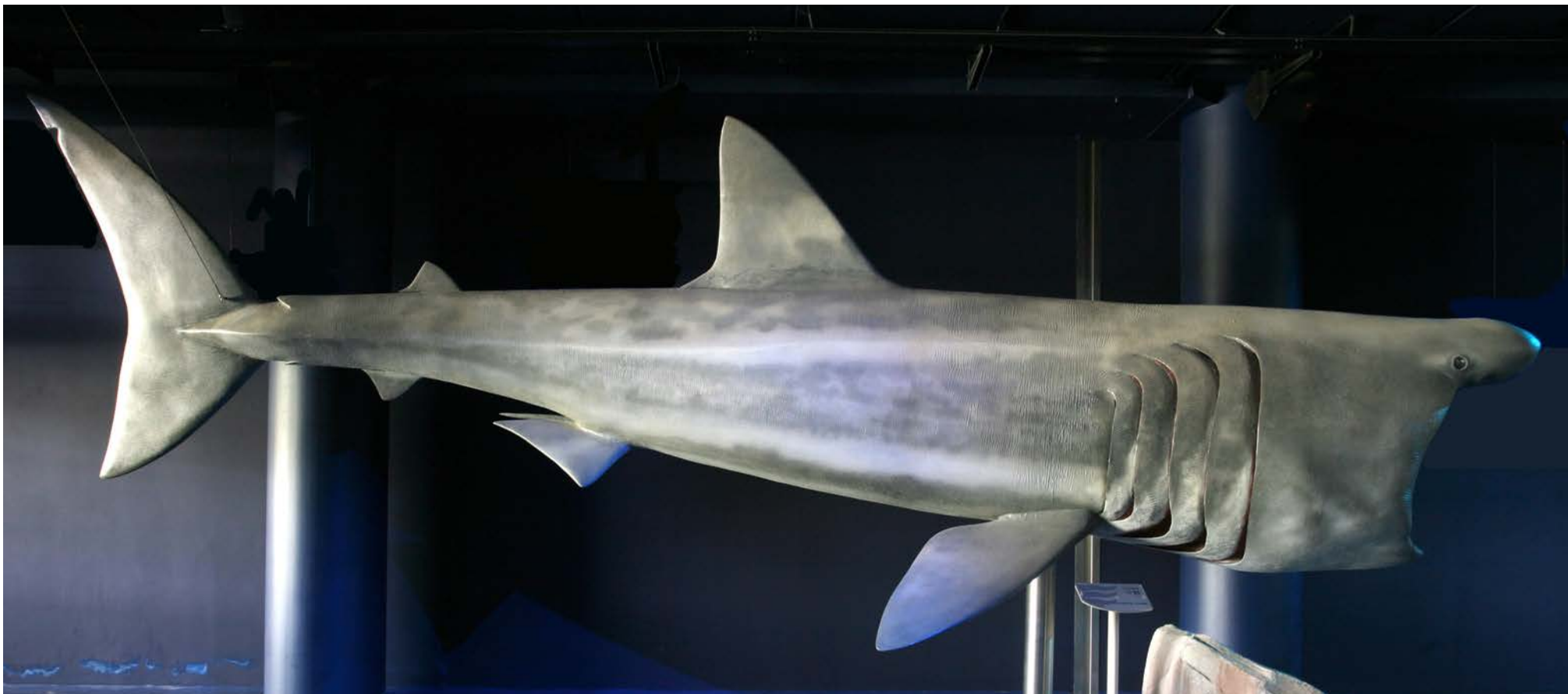
Estimate: € 40,000 - 60,000 + VAT

Estimates ex-works (Via Molinetto, 148 - 16016 Cogoleto, ITALY)

FISHES AND OTHER MARINE ORGANISMS

Hyper-realistic reproductions for museums and thematic exhibitions





Basking shark (*Cetorhinus maximus*)

Length: 5.00 - 8.00 m

Weight: 150 - 300 kg

Estimate: € 25,000 - 40,000 + VAT

Estimates ex-works (Via Molinetto, 148 - 16016 Cogoletto, ITALY)

Suitable for outdoors exhibitions

Sun fish (*Mola mola*)

Length: 3.00 m

Weight: 150 kg

Estimate: € 6,000 + VAT

Estimates ex-works (Via Molinetto, 148 - 16016 Cogoleto, ITALY)

Suitable for outdoors exhibitions





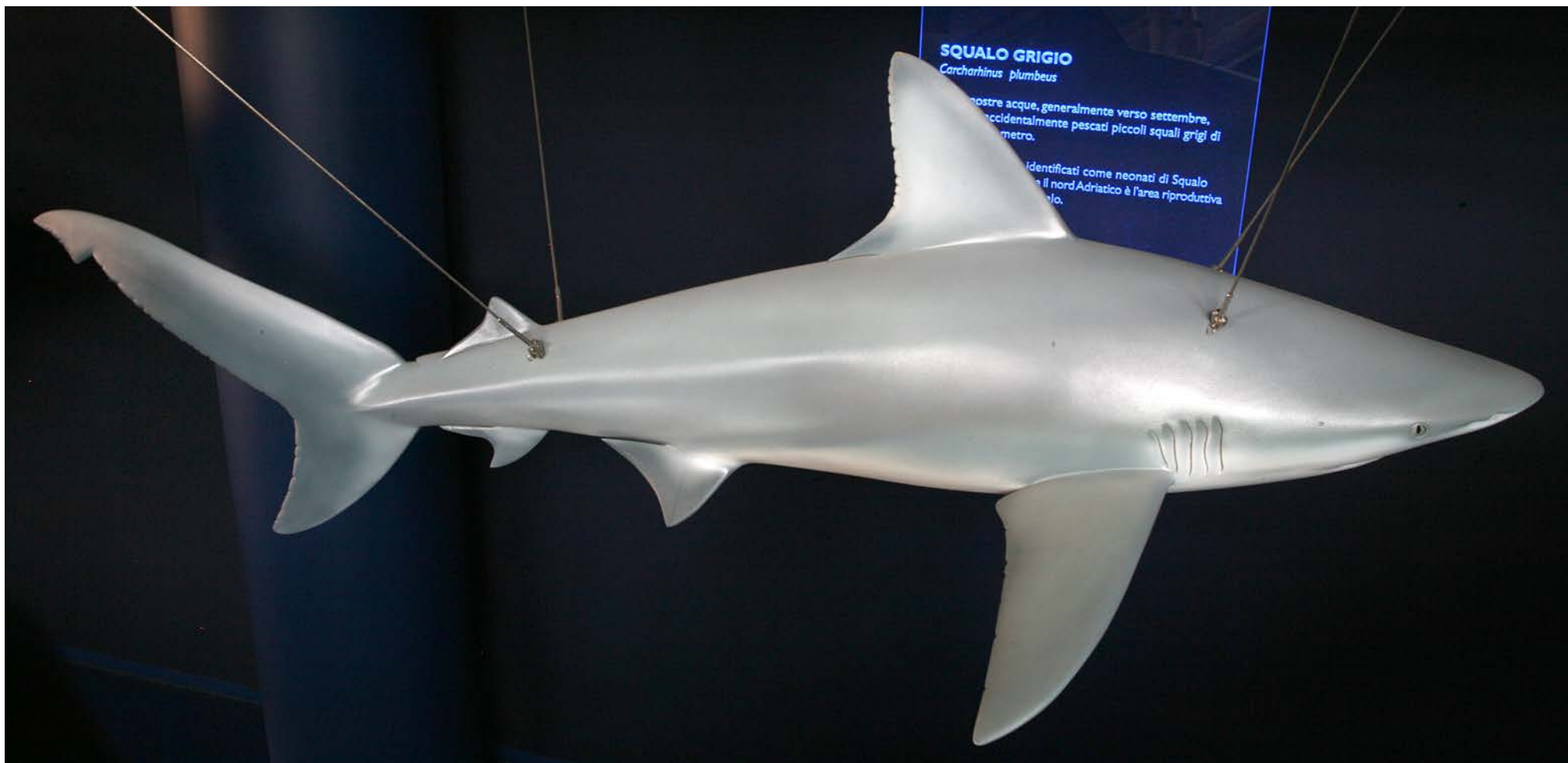
Sailfish
(*Istiophorus platypterus*)

Length: 2.00 m

Weight: 15 - 20 kg

Estimate: € 4,500 + VAT

Estimates ex-works (Via Molinetto, 148 - 16016
Cogoleto, ITALY)



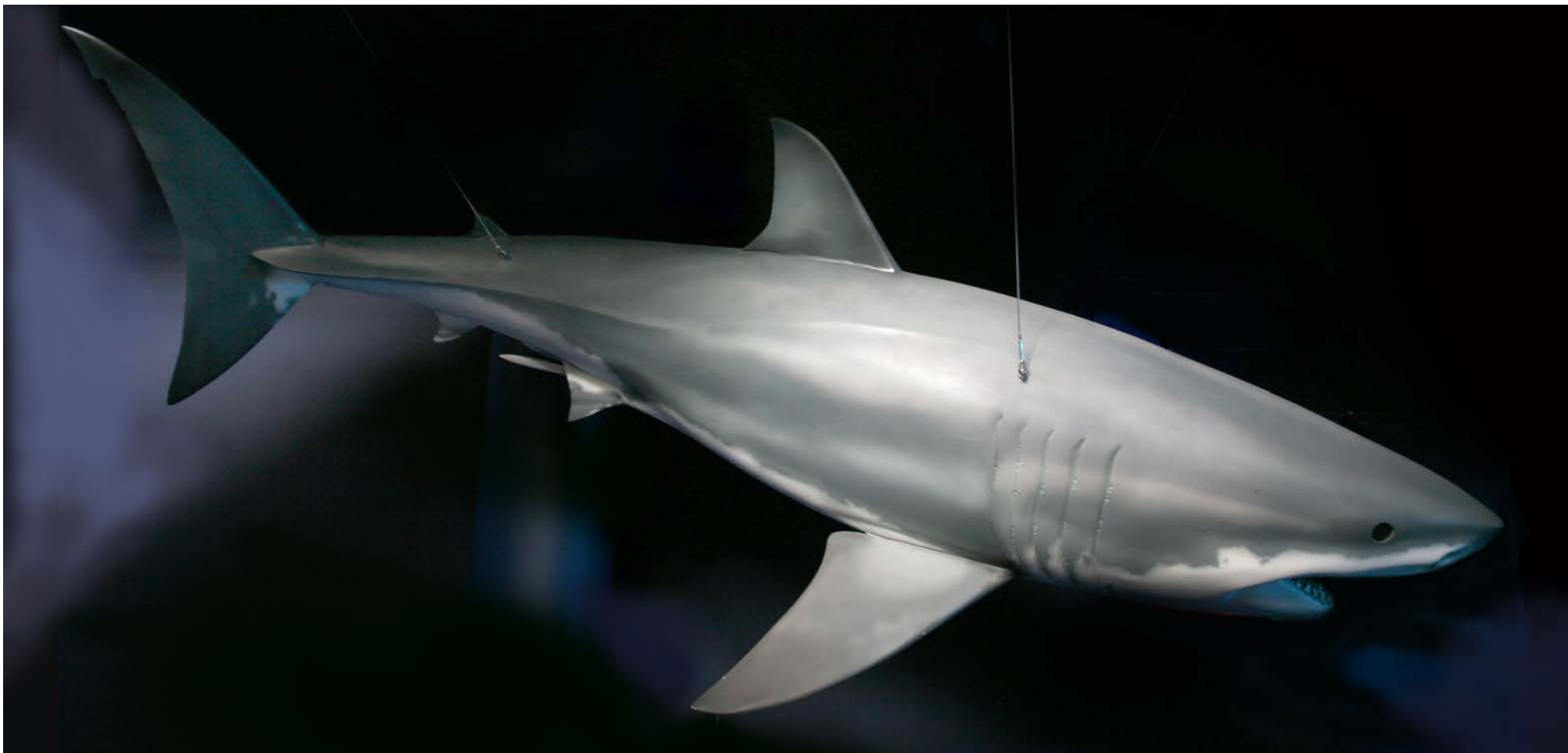
Grey shark (*Carcharhinus plumbeus*)

Length: 3.00 m

Weight: 10 kg

Estimate: € 3,500 + VAT

Estimates ex-works (Via Molinetto, 148 - 16016 Cogoleto, ITALY)



Great white shark (*Carcharodon carcharias*)

Length: 6.00 m

Weight: 150 kg

Estimate: € 12,000 + VAT

Estimates ex-works (Via Molinetto, 148 - 16016 Cogoletto, ITALY)

Suitable for outdoors exhibitions

Loggerhead turtle
(*Caretta caretta*)

Length: 0.5 - 1.20 m

Weight: 5 - 15 kg

Estimates: € 2,500 - 4,500 + VAT

Estimates ex-works (Via Molinetto, 148 - 16016
Cogoleto, ITALY)

Suitable for outdoors exhibitions





Whale shark (*Rhineodon typus*)

Length: 6.00 - 10.00 m

Weight: 150 - 500 kg

Estimates: € 15,000 - 30,000 + VAT

Estimates ex-works (Via Molinetto, 148 - 16016 Cogoletto, ITALY)

Suitable for outdoors exhibitions

Nautilus (*Nautilus macromphalus*)

Length: 0,30 m

Weight: 1,00 kg

Estimate: € 3,500 + VAT

Estimate ex-works (Via Molinetto, 148 - 16016 Cogoletto)



Permanent and temporary exhibitions

Museum of the Maremma - Grosseto, Italy

“G. Doria” Museum of Natural History - Genoa, Italy

Shanghai Natural History Museum - Shanghai, China

Zhejiang Museum of Natural History - Hangzhou, China

Museum of Natural History in Paris, France

Oltremare Park - Riccione, Italy

Oceanographic Museum, Monaco-Monte Carlo

Zoological Station, Naples, Italy

Losiny Marine Educational Center, Croatia

News on the Author

The author of the sculptures is Maurizio Würtz. Born in Genoa on March 21, 1950, he graduated in Biological Sciences and taught Comparative Anatomy, Cetacean Biology, Science Museography and Didactics of Science at the University of Genoa until 2014. From 1995 to 2002 he was Scientific Curator of the Oceanographic Museum of Monaco. Expert in Cetaceans and Ecology of the pelagic environment has published numerous scientific works and popular texts.

For Artescienza, which manage the rights of reproduction of his works since 2001, he has produced hundreds of scientific illustrations and dozens of sculptures and three-dimensional models of marine organisms.

For an overview of his works and the activity of Artescienza, visit the website www.artescienza.org



The new workshop
Via Molinetto 148 16016
Cogoleto (GE) Italy